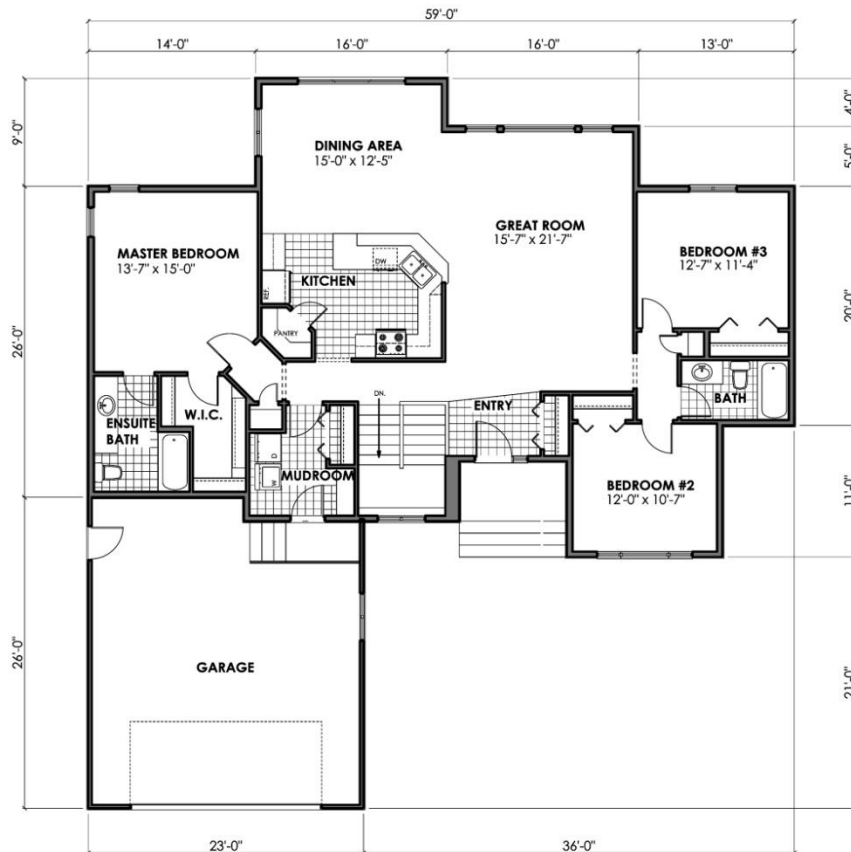


READY TO MOVE
BUILT ON SITE



Windridge 1796 sq.ft.

Options: Front landing, Basement stairs.

Note: Garage is included. Interior walls are 9' high.

Brochures are representational only and are subject to change without notice
www.starreadytomovehomes.com

STAR
 READY TO MOVE HOMES
 1066 Springfield Road, Phone 204-669-9200
 Winnipeg, Manitoba Fax 204-669-9494
 R2G 3T3 Toll-Free 1-888-545-2662

