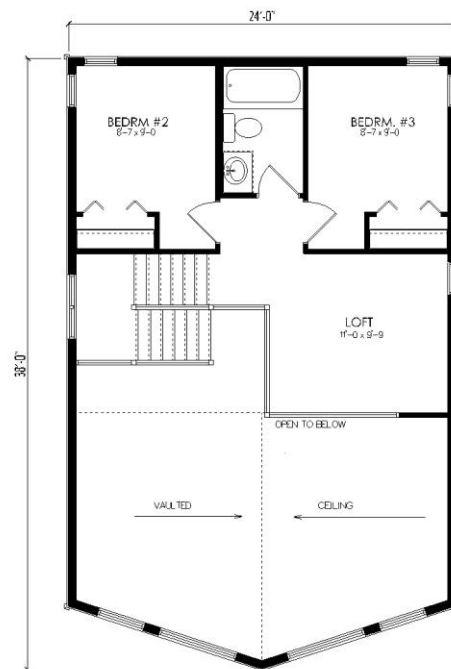
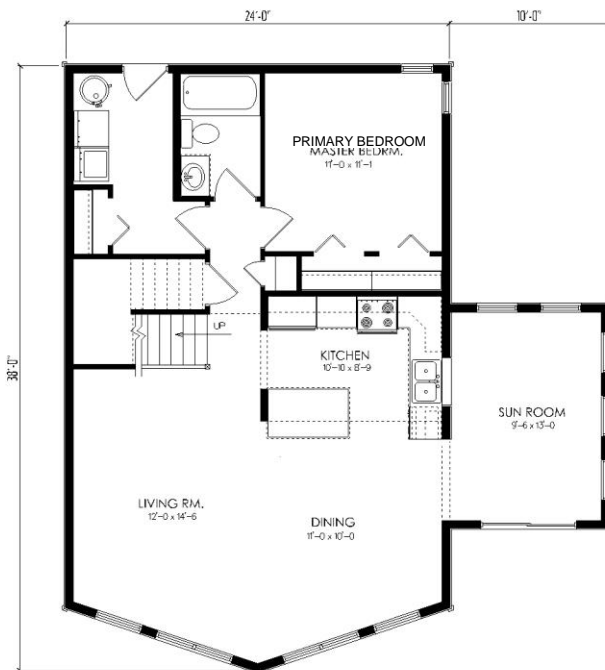


READY TO MOVE
BUILT ON SITE



Sandpiper

1484 sq.ft.

Main Floor = 1004 sq.ft.

Second Floor = 480 sq.ft.

Options: Oak Spindle Railing.

Notes: Basement stairs, Final Painting and Exterior landing/stairs are not included.

Brochures are representational only and are subject to change without notice

www.starreadytomovehomes.com



STAR
READY TO MOVE HOMES
1066 Springfield Road, Phone 204-669-9200
Winnipeg, Manitoba Fax 204-669-9494
R2G 3T3 Toll-Free 1-888-545-2662