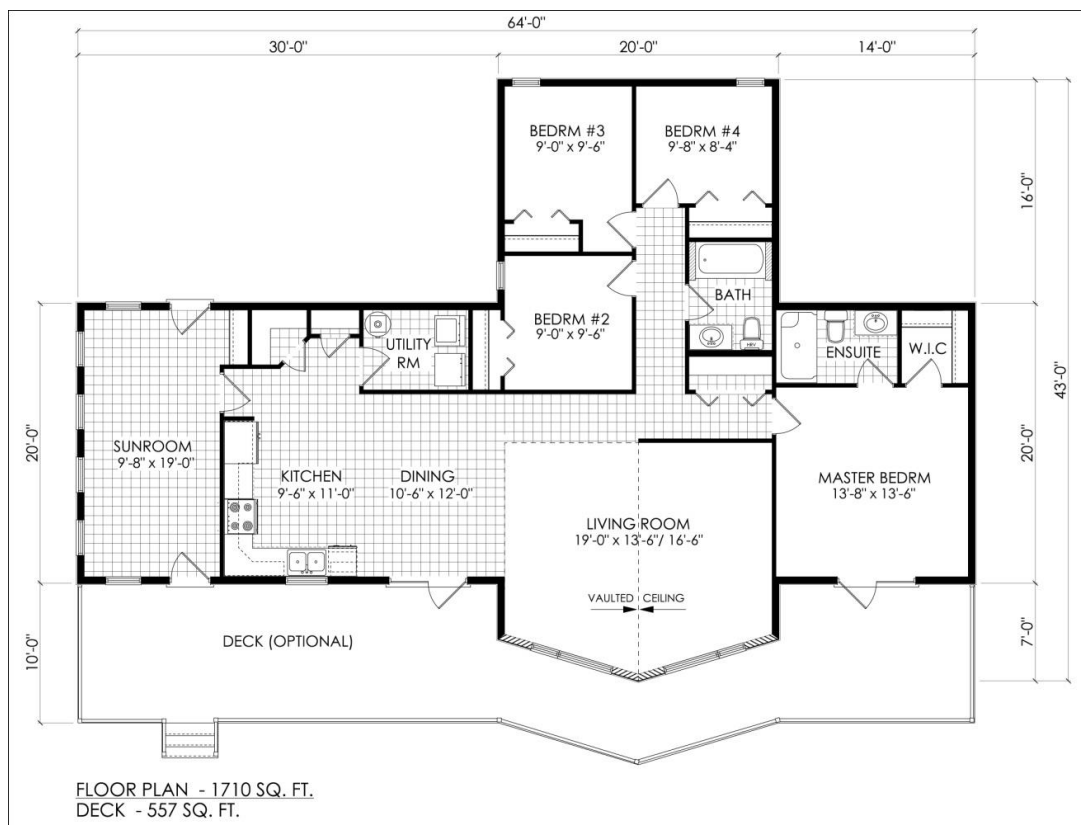


READY TO MOVE  
BUILT ON SITE



## Park Ridge 1710 sq. ft.

Upgrades/Options: Deck.

Brochures are representational only and are subject to change without notice

[www.starreadytomovehomes.com](http://www.starreadytomovehomes.com)



CSA  
Group



National  
HomeWarranty™

**STAR**

READY TO MOVE HOMES

1066 Springfield Road, Phone 204-669-9200  
Winnipeg, Manitoba Fax 204-669-9494  
R2G 3T3 Toll-Free 1-888-545-2662