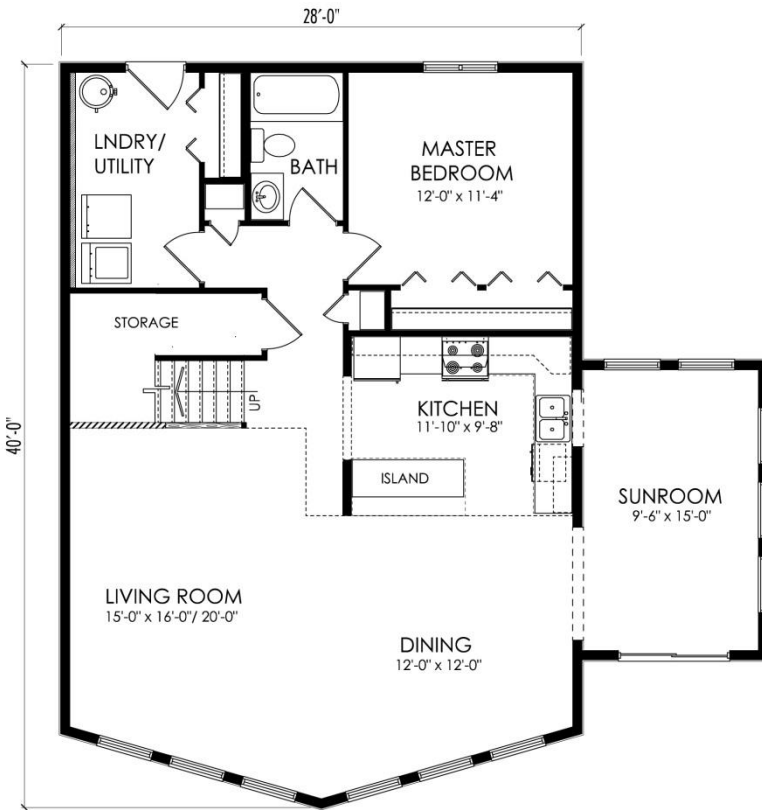
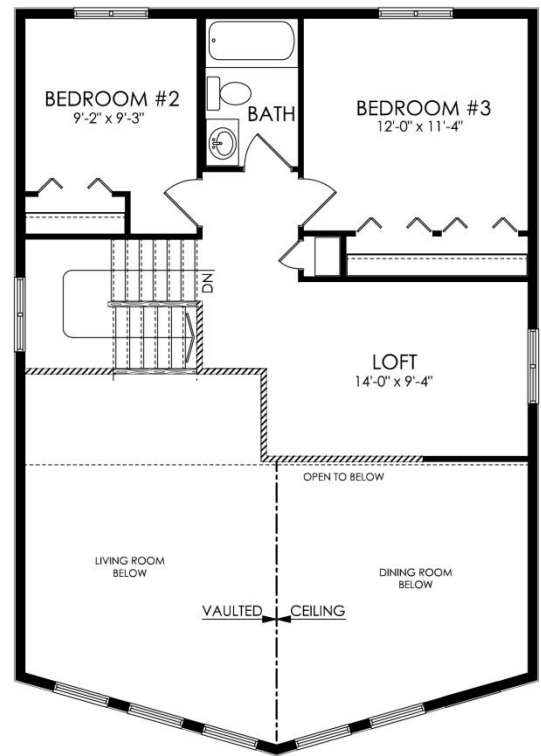


READY TO MOVE
BUILT ON SITE



MAIN FLOOR PLAN - 1224 SQ. FT.



UPPER FLOOR PLAN - 614 SQ. FT.

Osprey 1838 sq.ft.

Options: Deck, Basement stairs, Spindle railing.

Brochures are representational only and are subject to change without notice

www.starreadytomovehomes.com



STAR

READY TO MOVE HOMES

1066 Springfield Road, Phone 204-669-9200
Winnipeg, Manitoba Fax 204-669-9494
R2G 3T3 Toll-Free 1-888-545-2662