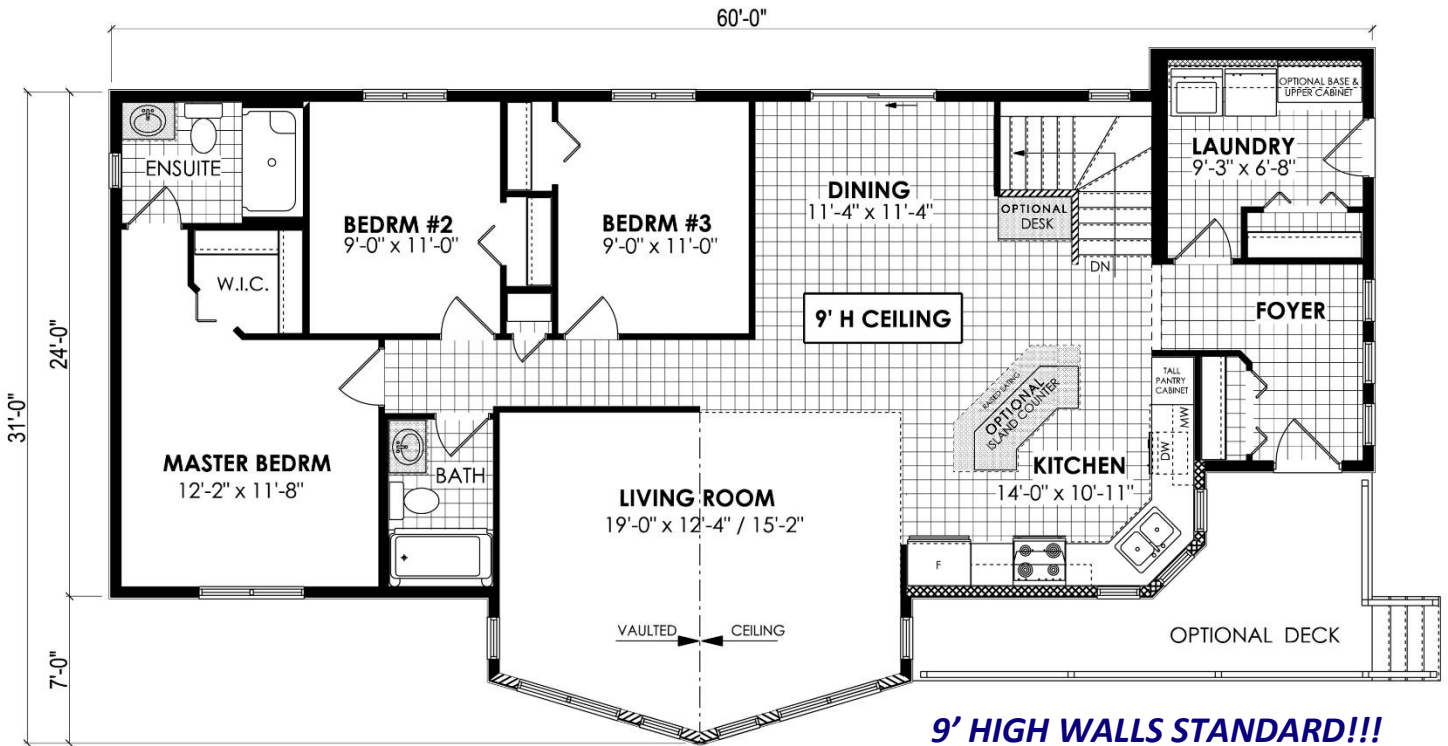


READY TO MOVE
BUILT ON SITE



Camara 1520 sq.ft.

Notes: Basement Stairs, Appliances And Finish Painting Are Not Included.
Island, Chef Desk, And Laundry Cabinets Optional, Deck Optional, Quality Stone Optional.

Brochures are representational only and are subject to change without notice

www.starreadytomovehomes.com



READY TO MOVE HOMES

1066 Springfield Road, Phone 204-669-9200
Winnipeg, Manitoba Fax 204-669-9494
R2G 3T3 Toll-Free 1-888-545-2662