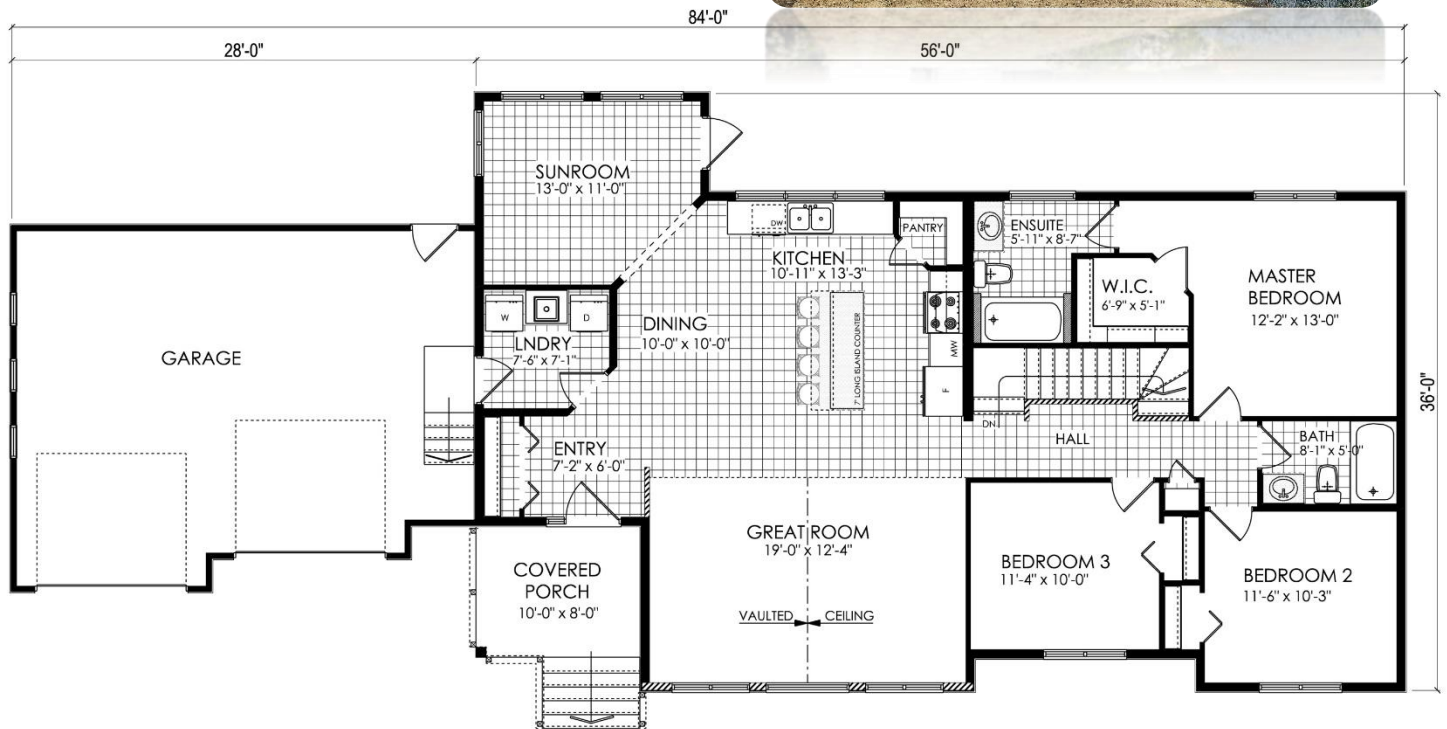


**READY TO MOVE
BUILT ON SITE**



Atworth 1637 sq.ft.

Options: Basement Stairs, Garage, Quality Stone, Gable Wood Details, Exterior Stairs, Foundry Shake

Brochures are representational only and are subject to change without notice

www.starreadytomovehomes.com



1066 Springfield Road, Phone 204-669-9200
Winnipeg, Manitoba Fax 204-669-9494
R2G 3T3 Toll-Free 1-888-545-2662

